

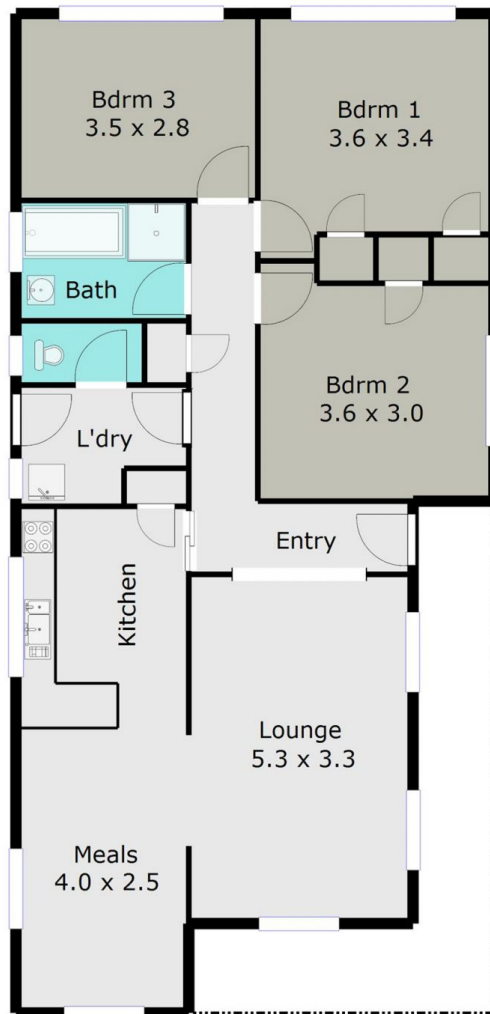
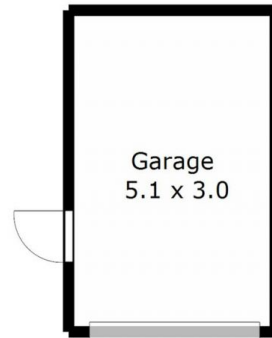
1/8 Peake Street BALLARAT VIC

3 1 1

Located in a quiet tree lined street, yet walking distance to all the city offers, this colonial townhouse couple suit a young person/couple, retired folk or as a blue chip investment. Three bedrooms together with a spacious rear yard give this home a definite edge, with wallpaper borders, polychrome brick inlaying and a return verandah enhancing the colonial influence. Formal living is commensurate with the balance of the home, with the bathroom tiled to the period and a lovely leadlight feature window. Comparisons are difficult, due to its position and unique features. First time offered for sale since built- could this be your next home ?

Building Size : 12 sqm
Land Size : 500 sqm
View : <https://www.doepels.com.au/sale/vic/ballarat-western-district/ballarat/residential/townhouse/6187199>

TOTAL LIVING AREA: APPROX. 13.8 SQ



DISCLAIMER:

ALL DIMENSIONS ARE APPROXIMATE & NOT 100% TO SCALE.
FOR FURTHER INFORMATION, PLEASE CONTACT YOUR AGENT DIRECTLY.

