






56 Waterford Drive Miners Rest VIC

3  2  2 

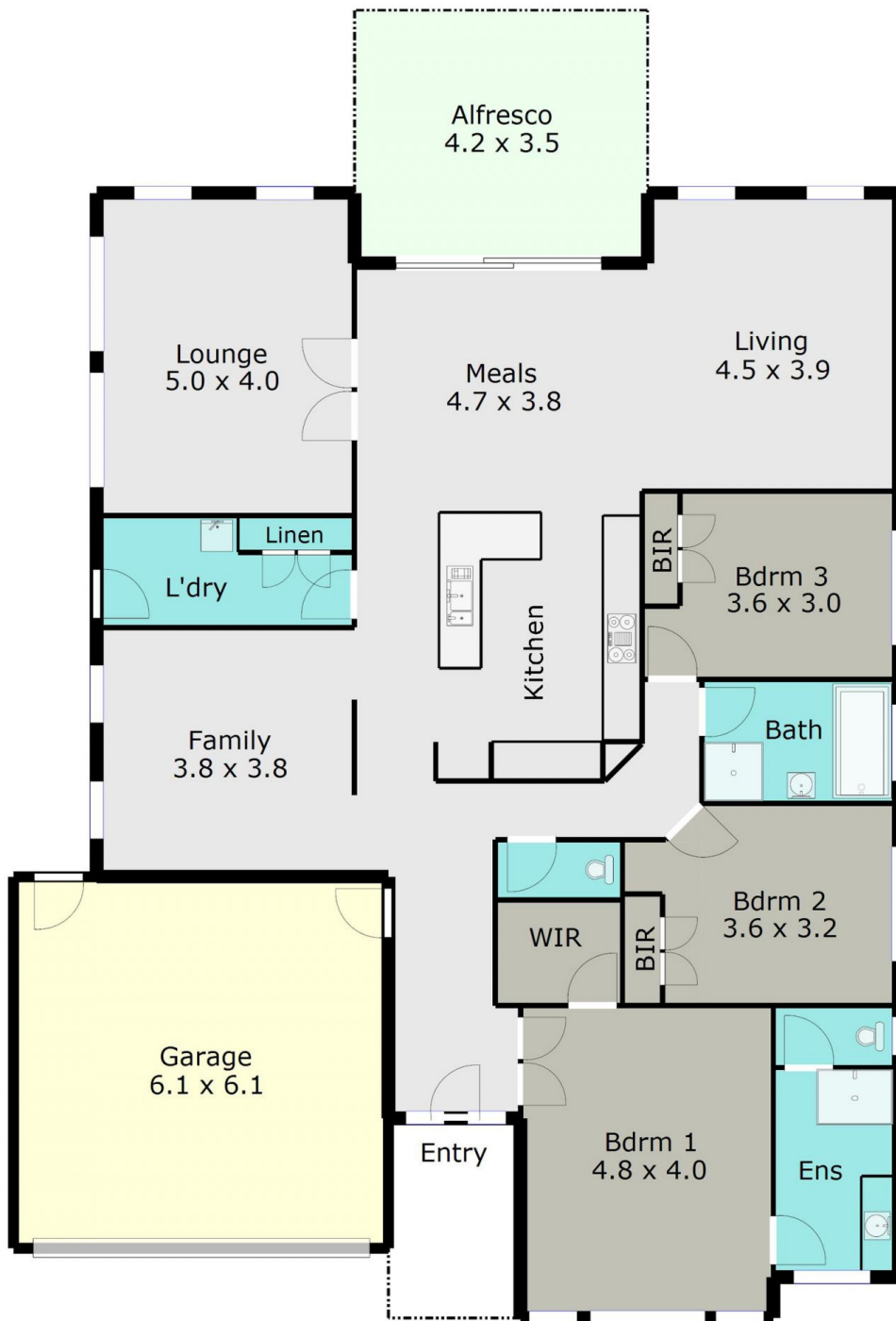
With Macarthur Park becoming attractive among all types of buyers, 56 Waterford is guaranteed to excite. Built by McMaster Homes on arguably the best street in the area the home has a great modern feel. With 3 huge separate living zones, the large theatre and rumpus room the highlight, a spacious open planned kitchen / meals, DLUG and a substantial master bedroom and ensuite which looks out across the wetlands, providing a fantastic outlook not many homes in the area can boast about. The 3rd living space could easily be converted into a 4th bedroom if needed. This will appeal to investors with a tenant currently paying \$345 per week. Book your private viewing today.

View : <https://www.doepels.com.au/sale/vic/ballarat-western-district/miners-rest/residential/house/6187532>



Tony Lockyer
03 5331 2000

TOTAL LIVING AREA: APPROX. 20.35SQ



DISCLAIMER:

ALL DIMENSIONS ARE APPROXIMATE & NOT 100% TO SCALE.
FOR FURTHER INFORMATION, PLEASE CONTACT YOUR AGENT DIRECTLY.

