



4/12 Pisgah Street Lake Wendouree VIC

2  1  1 

Modern styling, quality build, close to Lake and Hospitals
Two bedroom two storey quality townhouses by renowned local builder. Both bedrooms upstairs, living space down, 2 toilets, private courtyard, single garage etc. All expected features including double glazing, durable bamboo timber flooring, carpets and tiles, gas heating and split system air conditioning, double sink etc. Remote garage door, paving, landscaping, fencing etc. A quality development on the northern fringe of central Ballarat within easy walking distance of Lake Wendouree, hospitals and easy access to city centre. Call now.

Land Size : 180 sqm

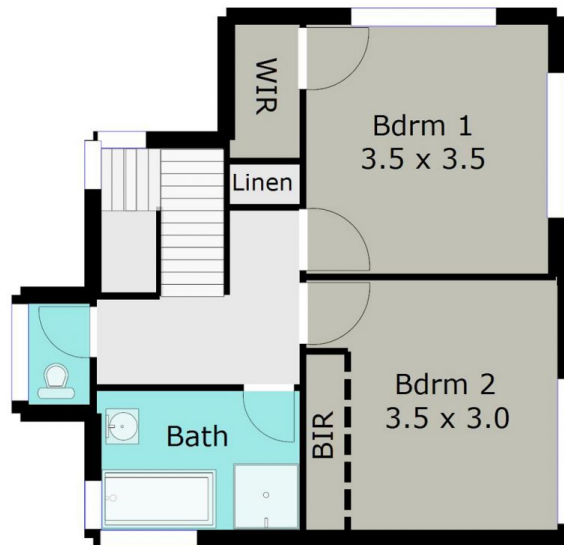
View : <https://www.doepels.com.au/sale/vic/ballarat-western-district/lake-wendouree/residential/townhouse/6187545>



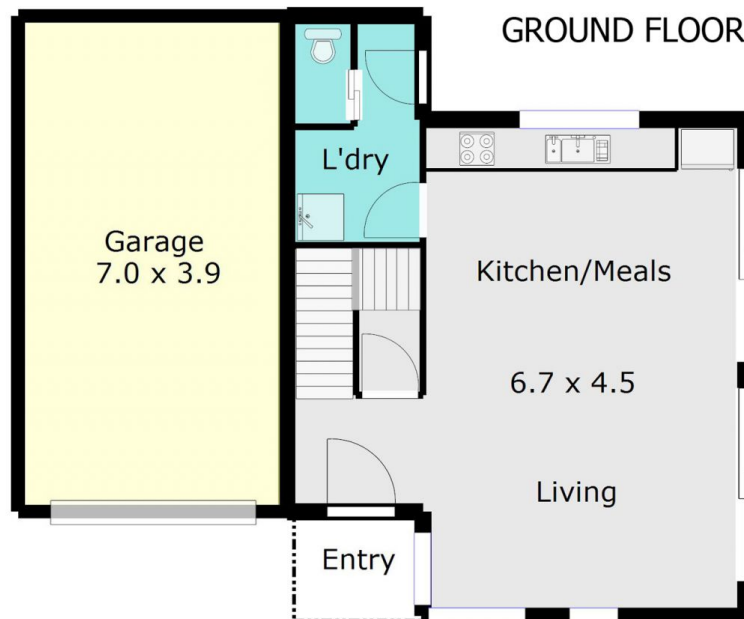
John Morris
03 5331 2000

TOTAL LIVING AREA: APPROX. 10.1 SQ

TOP LEVEL



GROUND FLOOR



DISCLAIMER:

ALL DIMENSIONS ARE APPROXIMATE & NOT 100% TO SCALE.
FOR FURTHER INFORMATION, PLEASE CONTACT YOUR AGENT DIRECTLY.

