






**3/12 Pisgah Street Ballarat Central VIC**

2  1  1 

Lomandra Lane - Two bedroom two storey quality townhouses by renowned local builder. Both bedrooms upstairs, living space downstairs with double sliding door access to a very private courtyard. Single garage with remote door and extra storage space and all expected features including throughout the home include double glazing, durable bamboo timber flooring, carpets and tiles, window coverings, gas heating and split system air conditioning, double sink etc. Water tank, paving, landscaping and fencing are all provided and it's ready to occupy. A quality development on the northern fringe of central Ballarat within easy walking distance of Lake Wendouree, hospitals and easy access to city centre. "Call now and move in tomorrow"

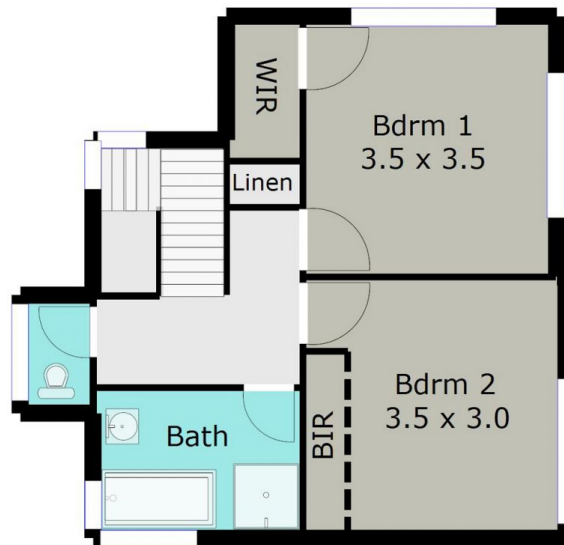
**Price** : \$ 262,500  
**Land Size** : 180 sqm  
**View** : <https://www.doepels.com.au/sale/vic/ballarat-western-district/ballarat-central/residential/unit/6187556>



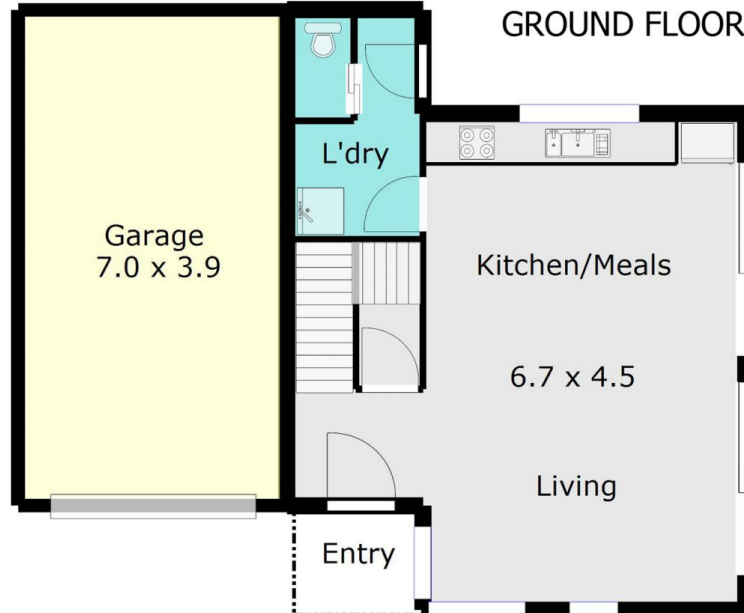
**John Morris**  
**03 5331 2000**

TOTAL LIVING AREA: APPROX. 10.1 SQ

TOP LEVEL



GROUND FLOOR



DISCLAIMER:

ALL DIMENSIONS ARE APPROXIMATE & NOT 100% TO SCALE.  
FOR FURTHER INFORMATION, PLEASE CONTACT YOUR AGENT DIRECTLY.

