



613 Eureka Street Ballarat East VIC

3 1 1

This lovely period home oozes character and charm the moment you walk up to the front door. As you walk in there is a formal lounge to the right with a gas log fire and large bay window as two main features to the room. Boasting 3 bedrooms all with their unique qualities, a central bathroom that has been renovated recently and the cosy open plan kitchen/dining and family area all facing to the north of the property plus the central heating and evaporative cooling will hold comfort all year round. The shed at the back has been transformed into a workshop although easily converted back to a single lock up garage. Utilise the large backyard to build further shedding as required whilst maintaining a lovely setting for the kids to venture and play in. Close proximity to the Eureka Stockade, pool and parkland are added benefits of this property.

Land Size : 930 sqm
View : <https://www.doepels.com.au/sale/vic/ballarat-western-district/ballarat-east/residential/home/6187589>

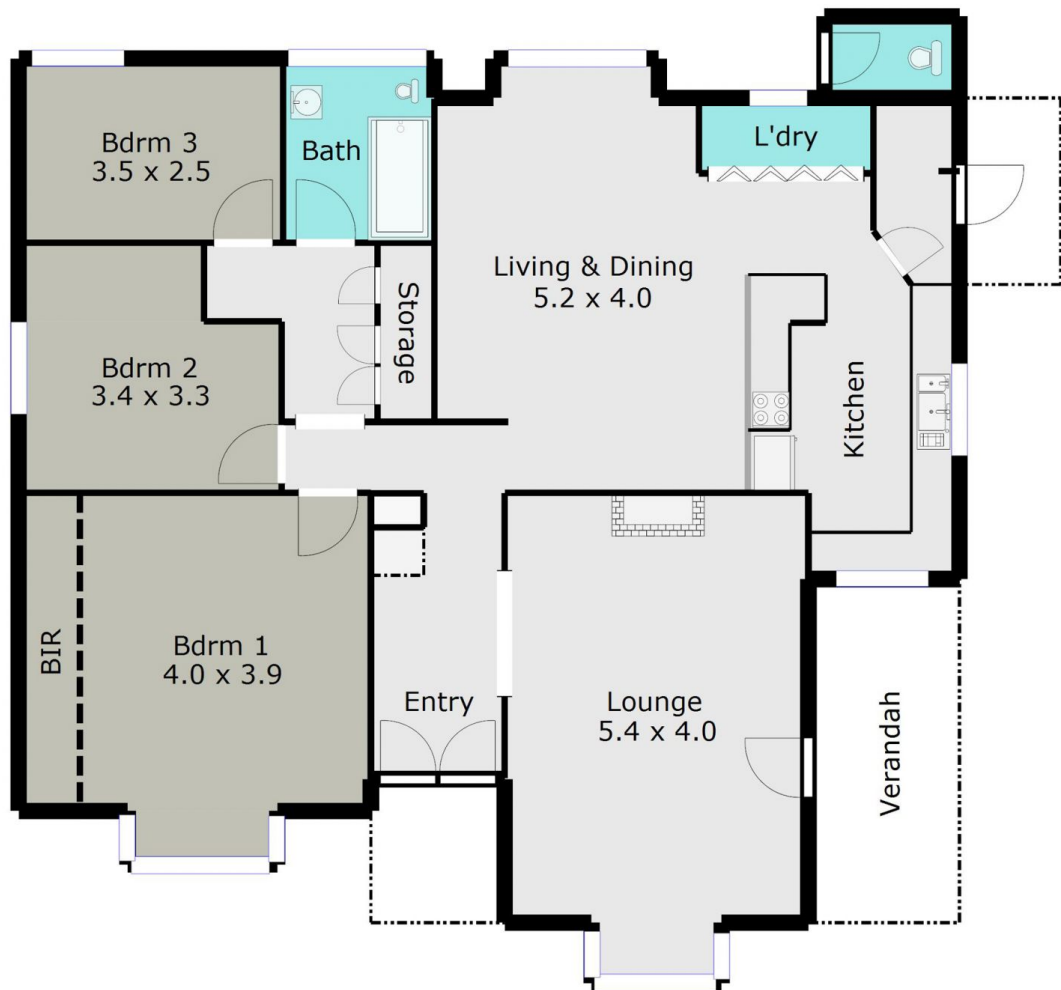


Leigh Hutchinson
03 5331 2000



Ian Moyle
03 5331 2000

TOTAL LIVING AREA: APPROX. 13.6SQ



DISCLAIMER:

ALL DIMENSIONS ARE APPROXIMATE & NOT 100% TO SCALE.
FOR FURTHER INFORMATION, PLEASE CONTACT YOUR AGENT DIRECTLY.

