



**78 Yarrowee Street Sebastopol VIC**

2  1  2 

This superbly presented 2 bedroom brick home has been proudly maintained by the current owner and offers the best of both worlds - unit style living with its own manageable sized block and double garage. The large main bedroom has a full wall of robes, BIRs in bedroom 2, north and east orientation for the living areas, large kitchen with corner pantry, separate bathroom, toilet and laundry, great storage throughout and impeccable condition. Security doors, sunblinds, auto garage door, easy-care gardens. And what a handy location.

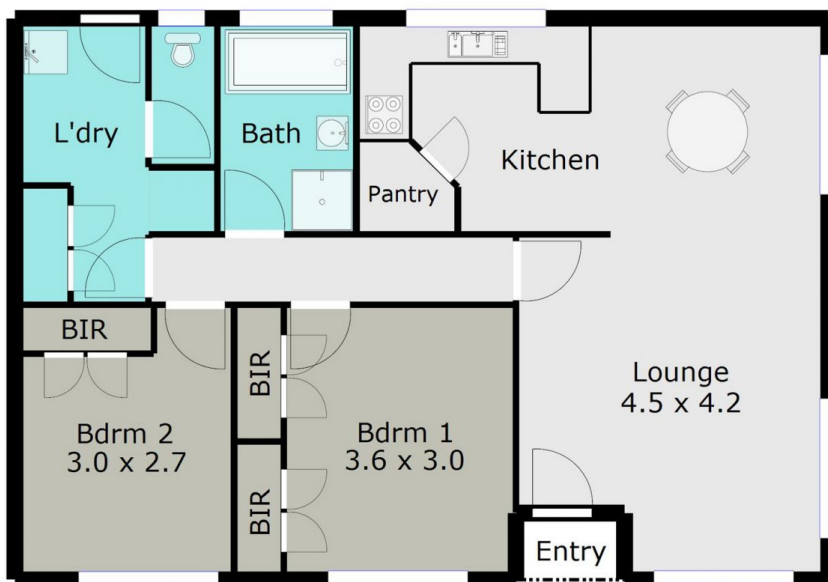
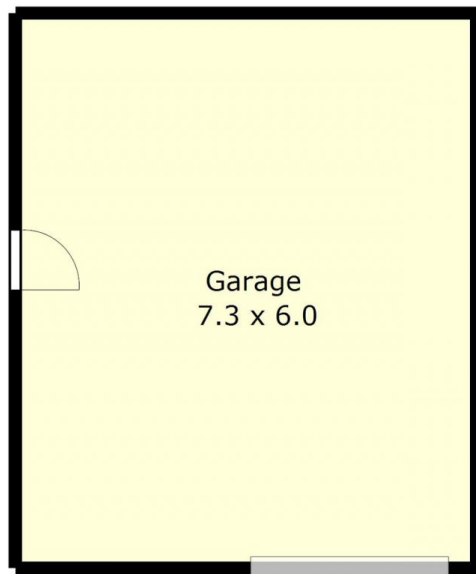
**Land Size** : 549 sqm

**View** : <https://www.doepels.com.au/sale/vic/ballarat-western-district/sebastopol/residential/unit/6187591>



**John Morris**  
03 5331 2000

TOTAL LIVING AREA: APPROX. 8.4SQ



DISCLAIMER:

ALL DIMENSIONS ARE APPROXIMATE & NOT 100% TO SCALE.  
FOR FURTHER INFORMATION, PLEASE CONTACT YOUR AGENT DIRECTLY.

