

**1/203 Clissold Street Black Hill VIC**

3 2 2

In a highly sought after location just at the base of Black Hill we present this fantastic two storey townhouse. Built by renowned and award winning local builders Ballarat Construction Management in 2010, this is where modern design meets functionality. Being just 750m from the Ballarat train station this is highly attractive for Melbourne commuters, or those wanting simply wanting to purchase in the tightly held central Ballarat market. Features include the sharp façade, large open planned living, 2 car garage, secluded courtyard and generous sized bedrooms, whilst the gas central heating and Daikin split system compensate for the ever changing Ballarat climate. A great first home, or blue-chip investment in one of the best affordable locales.

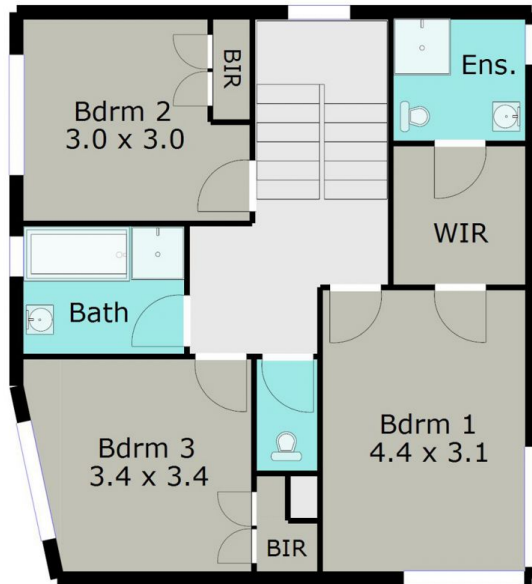
**Land Size** : 365 sqm  
**View** : <https://www.doepels.com.au/sale/vic/ballarat-western-district/black-hill/residential/townhouse/6187613>



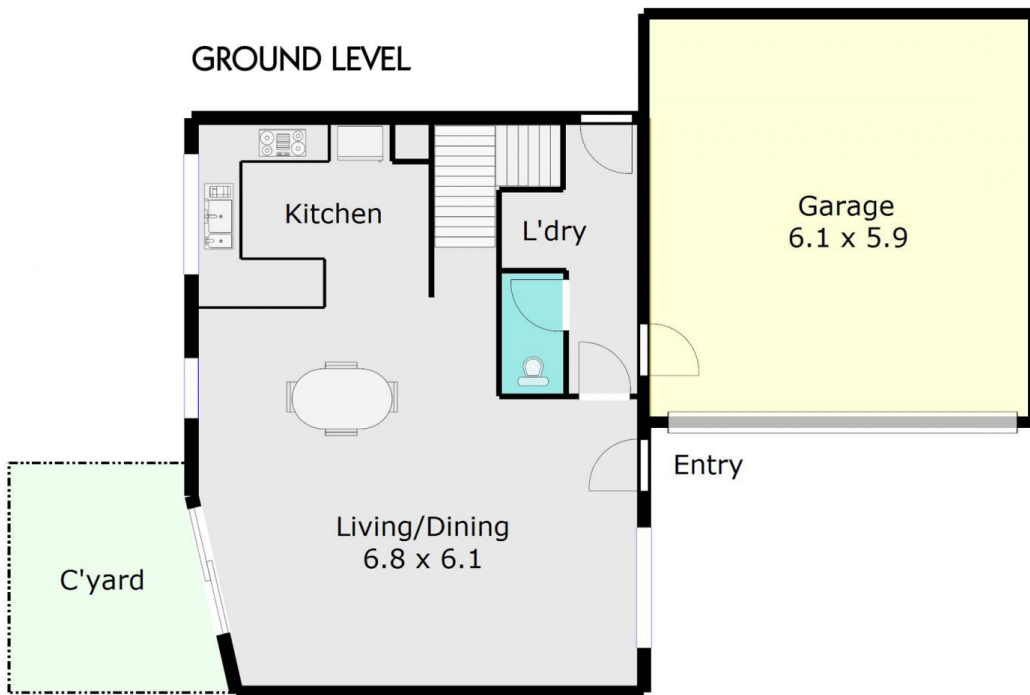
**Tony Lockyer**  
03 5331 2000

TOTAL LIVING AREA: APPROX. 13.8 SQ

TOP FLOOR



GROUND LEVEL



DISCLAIMER:

ALL DIMENSIONS ARE APPROXIMATE & NOT 100% TO SCALE.  
FOR FURTHER INFORMATION, PLEASE CONTACT YOUR AGENT DIRECTLY.

