



1150 Grevillea Road Wendouree VIC

3  1  2 

This three bedroom brick veneer home is in a great location on a corner block in Wendouree and close to schools, public transport and Stockland shopping complex. Featuring a good size kitchen and meals area with plenty of storage, built-in robes to two BRs, spacious lounge with new flooring, gas heater and a split system, this property has a lot to offer. This good block size of approx 593sqm which includes a spacious double garage to complete the package. Great value and ready for the keen renovator, investor or first home buyer.

Land Size : 593 sqm

View : <https://www.doepels.com.au/sale/vic/ballarat-western-district/wendouree/residential/house/6187616>

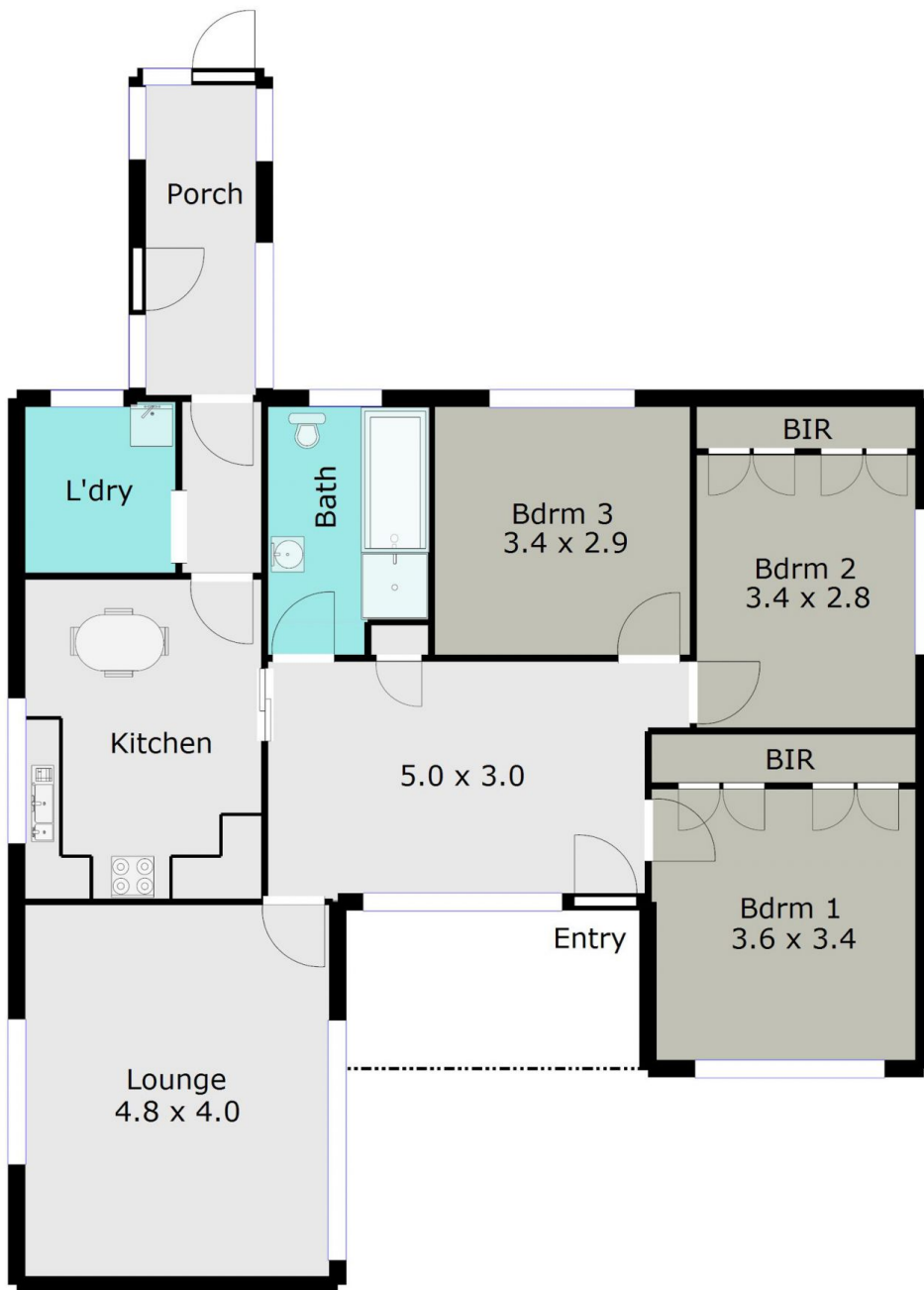


Leigh Hutchinson
03 5331 2000



Ian Moyle
03 5331 2000

TOTAL LIVING AREA: APPROX. 11.5 SQ



DISCLAIMER:

ALL DIMENSIONS ARE APPROXIMATE & NOT 100% TO SCALE.
FOR FURTHER INFORMATION, PLEASE CONTACT YOUR AGENT DIRECTLY.

