



9/1131 Eyre Street Newington VIC

2  1  1 

A rare opportunity to acquire this fantastic townhouse (Hope street frontage) in a very neat and respectable complex in Eyre street, just behind the Colleges, close to Victoria Park and primary school. 2 spacious bedrooms, dining area adjacent to the modern kitchen with 900mm oven and 5 burner cooktop, renovated bathroom, and spacious lounge with gas heating. Tip-top order throughout with carport, garden shed and spacious private yard. Excellent tenant to June 2017 or longer if required. A rare find indeed, and sure to sell quickly in this top location.

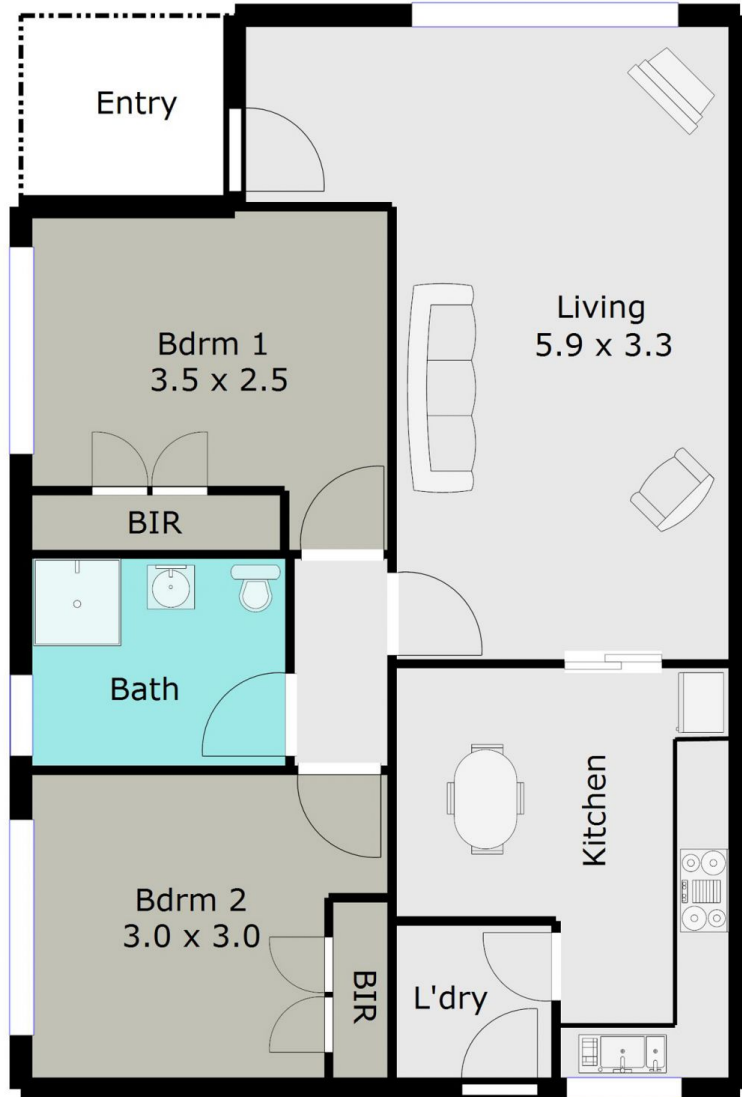
**Land Size** : 150 sqm

**View** : <https://www.doepels.com.au/sale/vic/ballarat-western-district/newington/residential/unit/6187631>



**John Morris**  
03 5331 2000

TOTAL LIVING AREA: APPROX. 7.2 SQ



DISCLAIMER:

ALL DIMENSIONS ARE APPROXIMATE & NOT 100% TO SCALE.  
FOR FURTHER INFORMATION, PLEASE CONTACT YOUR AGENT DIRECTLY.

