






2 Beverley Court Canadian VIC

3  2  3 

Convenient and comfortable and quite spacious. 3 bedrooms, ensuite and walk-in robe to main, BIRs in others, main bathroom has corner spa and shower, and is adjacent to the powder room toilet and laundry. Separate lounge, large meals area adjoining the timber kitchen with corner pantry, large fridge space, dishwasher etc and the summer/winter comfort is provided via a large split system air conditioner and near new gas ducted heating. Easy access to the double carport and garage-sized workshop. Beautiful 825sqm block with fruit trees and ample room for many family pursuits. Don't delay - inspect today.

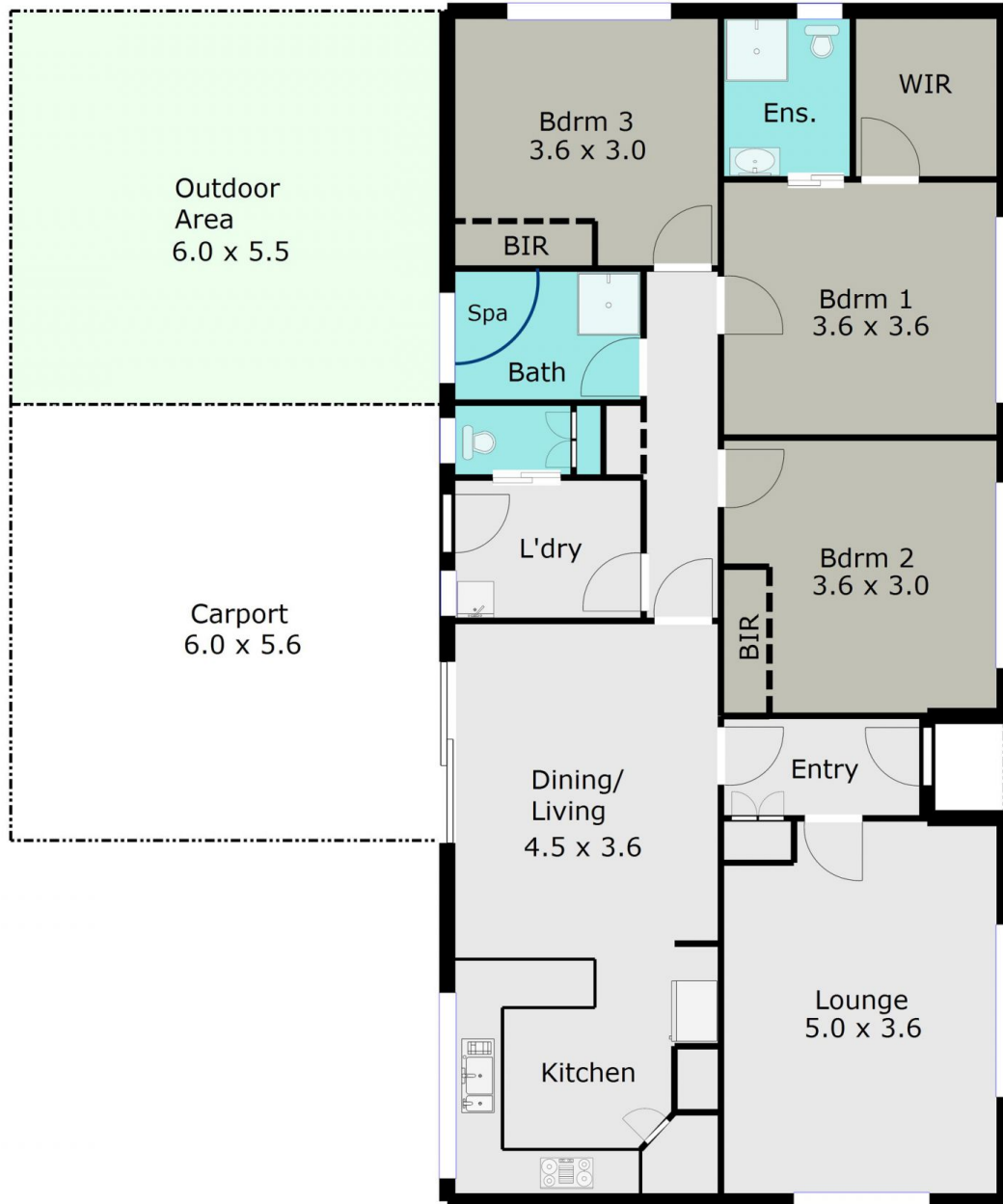
Land Size : 825 sqm

View : <https://www.doepels.com.au/sale/vic/ballarat-western-district/canadian/residential/house/6187634>



John Morris
03 5331 2000

TOTAL LIVING AREA: APPROX. 13.1 SQ



DISCLAIMER:

ALL DIMENSIONS ARE APPROXIMATE & NOT 100% TO SCALE.
FOR FURTHER INFORMATION, PLEASE CONTACT YOUR AGENT DIRECTLY.

