






206 Eureka Street Ballarat East VIC

2  1  1 

A great investment /development opportunity in a handy central east location and close to city centre, Sovereign Hill, University Access and bus routes. This solid home offers one bathroom and a second toilet off the laundry and sunroom, 2 spacious bedrooms, excellent living space with a good size kitchen area, lounge and dining room. The block size is of approx. 993sqm with good access to the large backyard, SLUG and sealed road at rear. Take a look today to secure a solid investment for the future. Previously let at \$255 per week.

Land Size : 993 sqm
View : <https://www.doepels.com.au/sale/vic/ballarat-western-district/ballarat-east/residential/home/6187644>

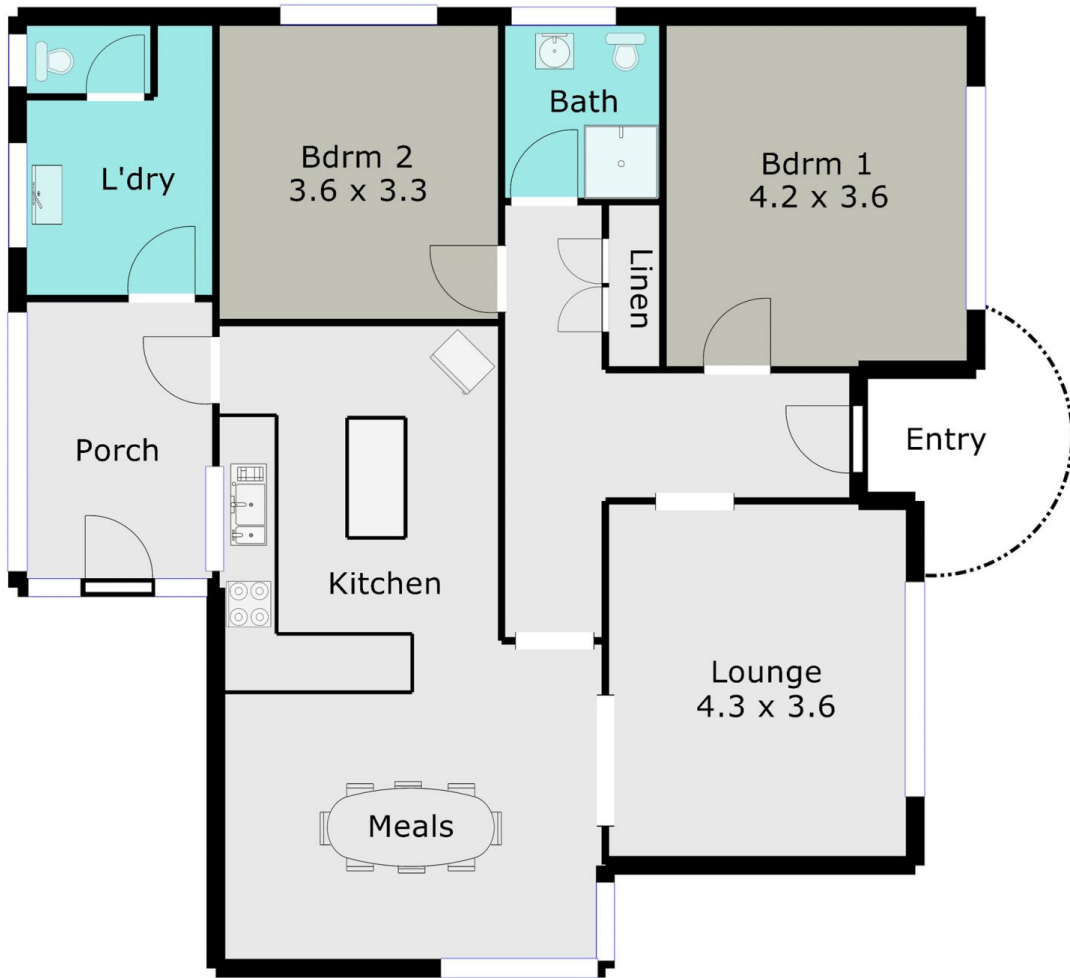


Leigh Hutchinson
03 5331 2000



Ian Moyle
03 5331 2000

TOTAL LIVING AREA: APPROX. 11.3 SQ



DISCLAIMER:

ALL DIMENSIONS ARE APPROXIMATE & NOT 100% TO SCALE.
FOR FURTHER INFORMATION, PLEASE CONTACT YOUR AGENT DIRECTLY.

