



2 Zofia Place Alfredton VIC

4  2  2 

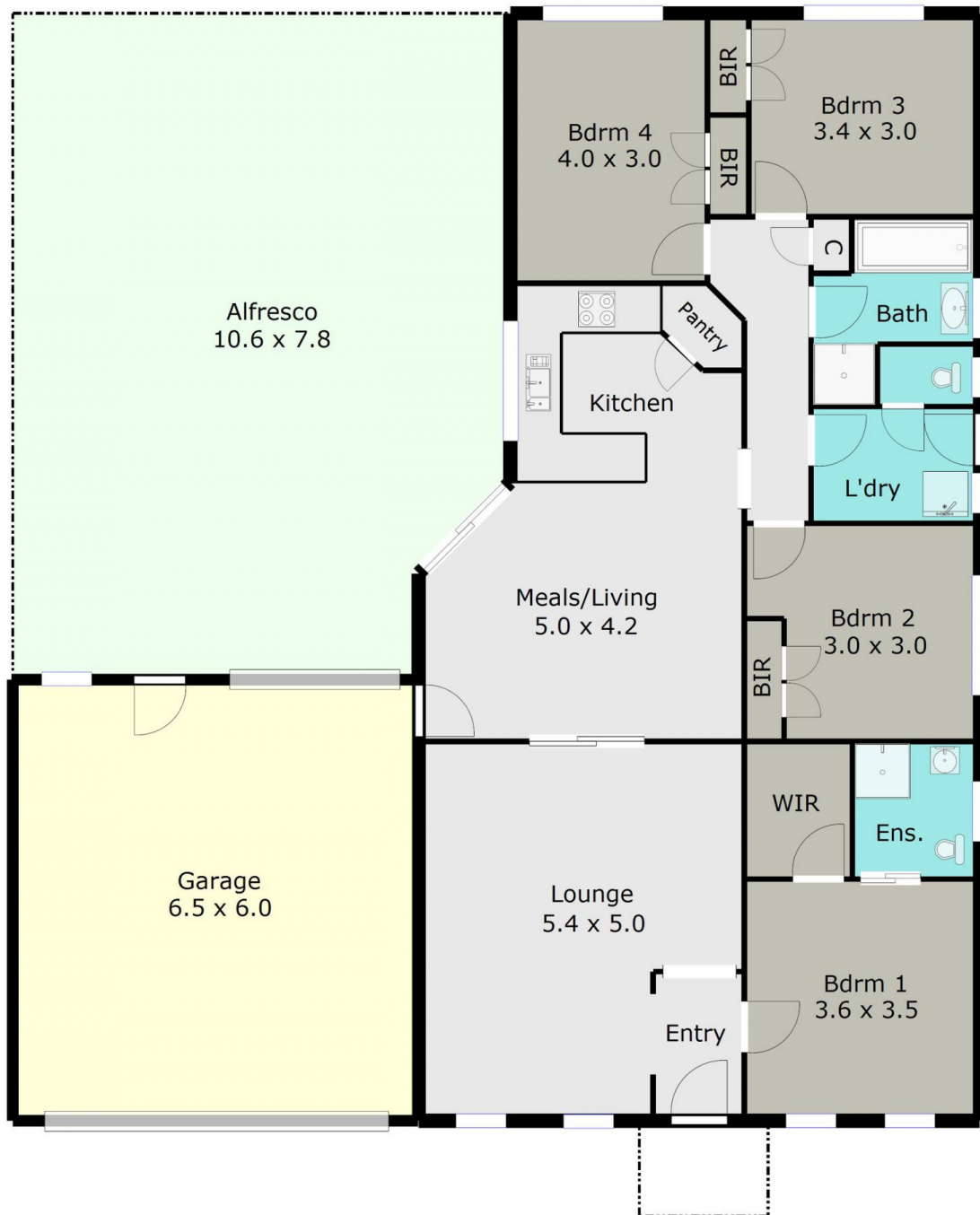
Top location close to so many facilities in the ever-popular Alfredton. 4 lovely sized bedrooms including en suite and walk-in robe to the main, spacious kitchen meals living area and a separate lounge for quieter times. Well appointed throughout with under bench oven, hotplates, dishwasher, walk-in pantry, central heating, sunblinds etc. Enormous covered alfresco with patterned paving, with access through the double garage to a further garage/ workshop/ "mancave" of approx 8x5m. Private easy-care yard of 613sqm to suit many tastes. Be quick, this is a wonderful property priced to sell.

Land Size : 613 sqm

View : <https://www.doepels.com.au/sale/vic/ballarat-western-district/alfredton/residential/house/6187669>



John Morris
03 5331 2000



DISCLAIMER:

ALL DIMENSIONS ARE APPROXIMATE & NOT 100% TO SCALE.
 FOR FURTHER INFORMATION, PLEASE CONTACT YOUR AGENT DIRECTLY.

