



425 Cobden Street Mount Pleasant VIC

3 1 1

Glorious views over the city from the north facing lounge sets this apart from any other house in the area. Located in a popular Mount Pleasant street and close to the CBD, within walking distance to Mount Pleasant Primary, Kindergarten and public transport. This low maintenance, immaculate brick veneer home is solid and boasts many original internal features including large windows that fill the house with natural light. Comprising 3 bedrooms all with BIRs, master bedroom has access to the two-way bathroom with an open/walk in shower, fantastic for people needing wheelchair access. Great sized living room with a gas wall heater and adjoining is a good sized combined kitchen and dining area. Kitchen features electric wall oven and gas hotplates plus soft closing drawers. The front entrance has an enclosed porch area perfect for Ballarat winters. Outside you will find a single lock up garage and lovely picturesque landscaped gardens all on an 706m2

Land Size : 706 sqm

View : <https://www.doepels.com.au/sale/vic/ballarat-western-district/mount-pleasant/residential/house/6187676>

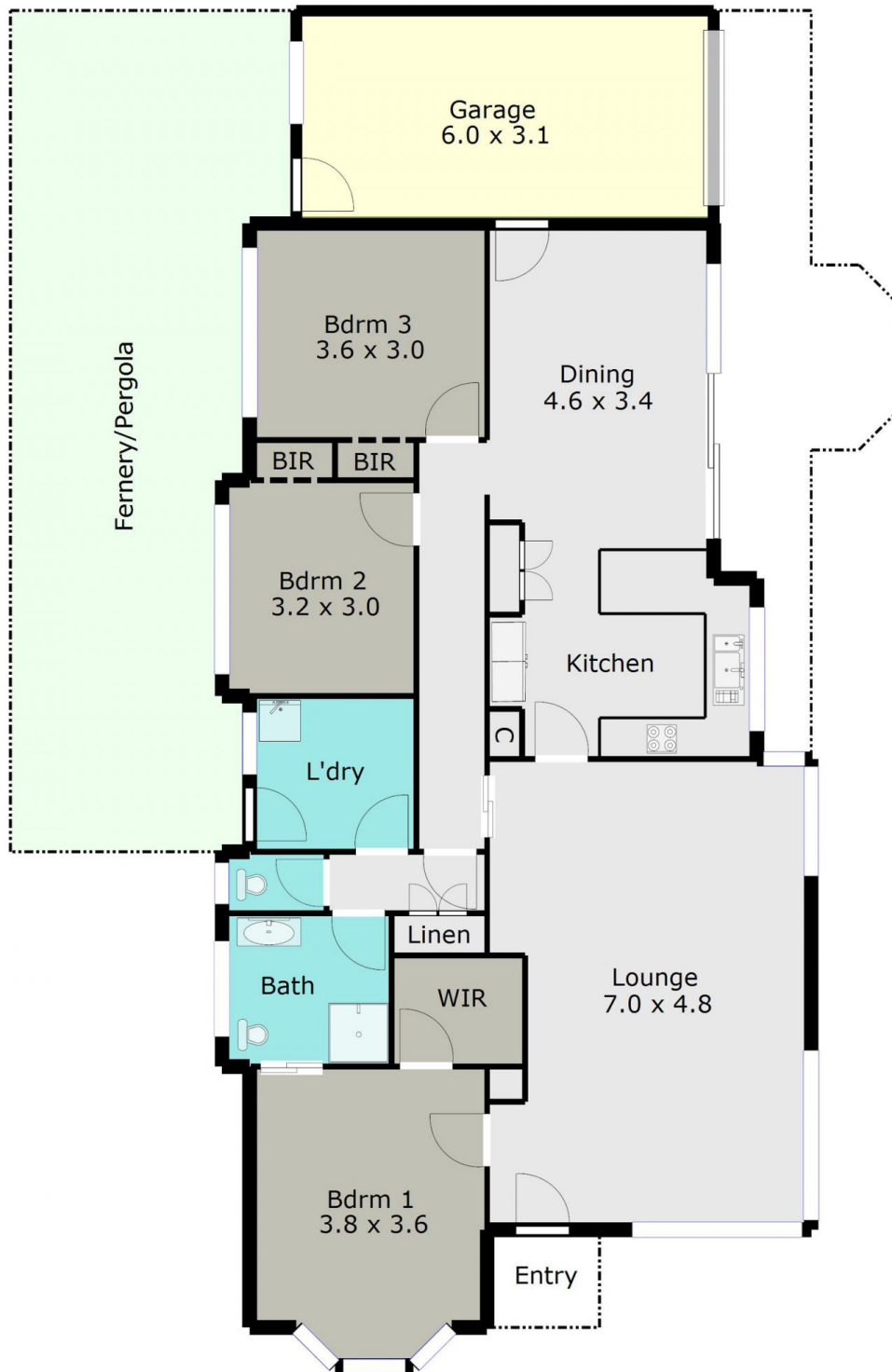


Leigh Hutchinson
03 5331 2000



Ian Moyle
03 5331 2000

TOTAL LIVING AREA: APPROX. 13.4 SQ



DISCLAIMER:

ALL DIMENSIONS ARE APPROXIMATE & NOT 100% TO SCALE.
FOR FURTHER INFORMATION, PLEASE CONTACT YOUR AGENT DIRECTLY.

