



### 101 Smythes Road Delacombe VIC

3  1  2 

Great first home or investment in ever-popular location close to new Delacombe Town Centre, schools etc. Immaculate inside and out with recently remodelled kitchen, and bathroom, appliances, new floor and window coverings, central heating and split system for all year comfort. 3 spacious bedrooms, kitchen meals living with a northerly aspect, large second living area and undercover outdoor living. Lovely bathroom, good storage throughout, and second shower facility in the laundry. Double carport with full-size caravan access, garden shed and lovely garden layout. Be quick as this superb home represents great value on its spacious 900sqm allotment

**Price** : \$ 279,500

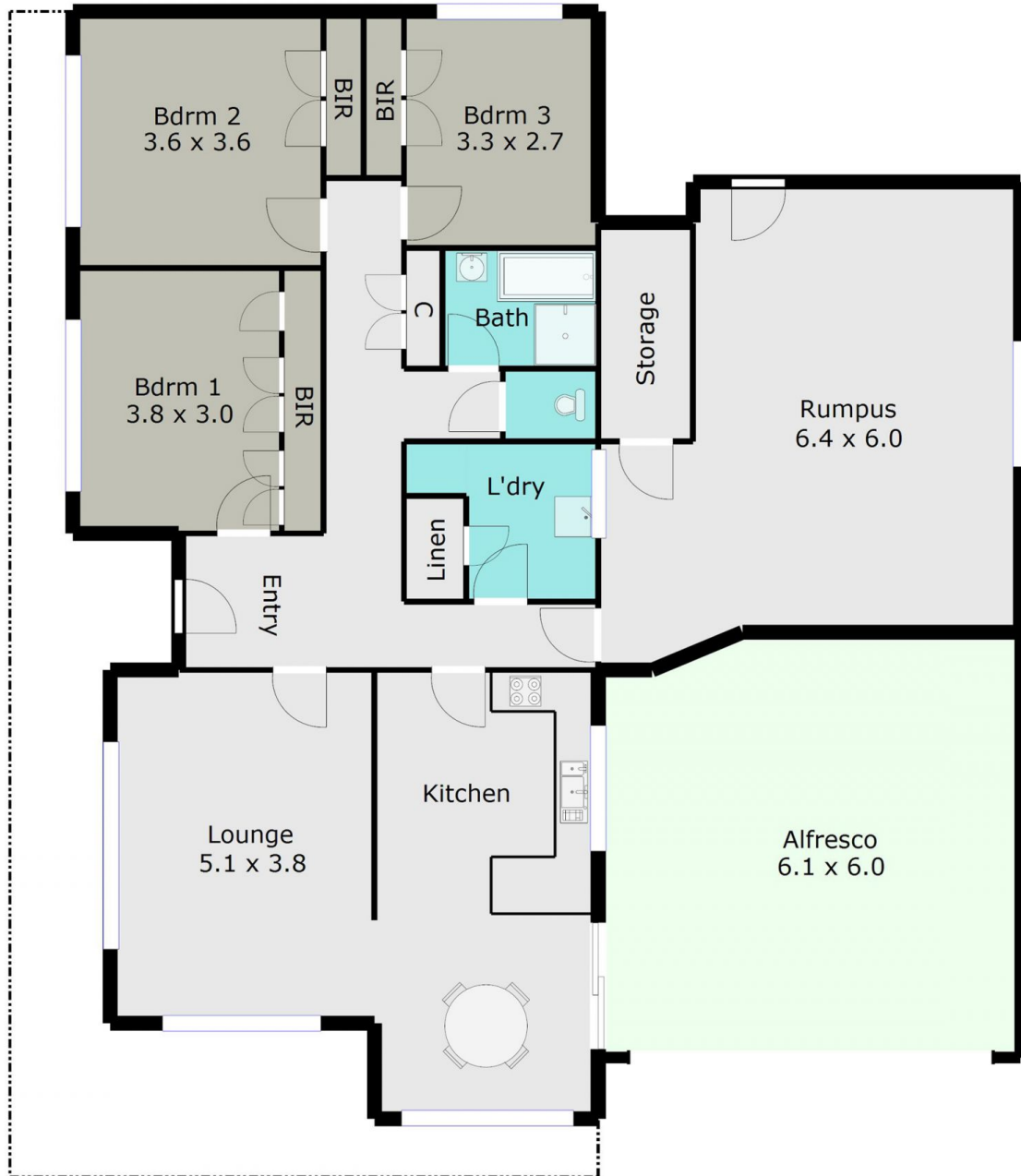
**Land Size** : 900 sqm

**View** : <https://www.doepels.com.au/sale/vic/ballarat-western-district/delacombe/residential/house/6187677>



**John Morris**  
03 5331 2000

TOTAL LIVING AREA: APPROX. 16.7 SQ



DISCLAIMER:

ALL DIMENSIONS ARE APPROXIMATE & NOT 100% TO SCALE.  
FOR FURTHER INFORMATION, PLEASE CONTACT YOUR AGENT DIRECTLY.

