



205 Victoria Street Ballarat East VIC

2  1 

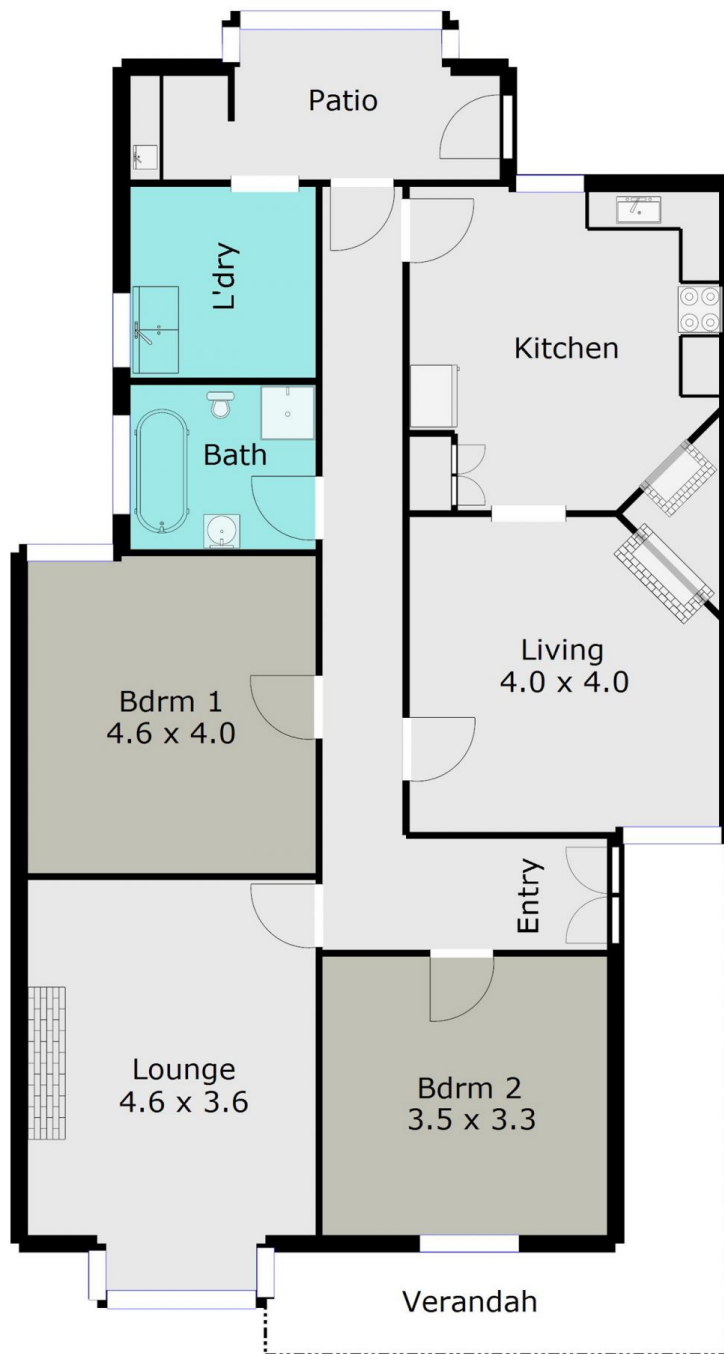
Since the booming gold rush days of Ballarat, Victoria St was known as a gateway from Melbourne to Ballarat, highly desirable and grand, capturing the charm of what Ballarat has to offer. Not much has changed since; with this tree lined avenue being the home to some of Ballarat's most enchanting homes, and this charming Californian Bungalow fits right in with the bunch. Begging for a renovation this home will please the astute buyers, especially those looking for their next project. Liveable as is, with the structural bones of the home still in great shape, here lies an opportunity to maintain the character this home has to offer and turn it into something truly special. With rear access off Gent St and an allotment size of approximately 558m², the scope for potential is enormous. Inspections are a must and will not disappoint.

Price : \$ 340,000
Land Size : 558 sqm
View : <https://www.doepels.com.au/sale/vic/ballarat-western-district/ballarat-east/residential/home/6187688>



Tony Lockyer
03 5331 2000

TOTAL LIVING AREA: APPROX. 12.2 SQ



DISCLAIMER:

ALL DIMENSIONS ARE APPROXIMATE & NOT 100% TO SCALE.
FOR FURTHER INFORMATION, PLEASE CONTACT YOUR AGENT DIRECTLY.

