






6 Chapel Cross Court Delacombe VIC

3  2  2 

Delacombe Town Centre just around the corner, convenient to schools etc. A well presented family home on large block with rear yard access if required and ample room for an extra double garage. Well presented throughout with separate large study, 3 bedrooms with ensuite and WIR to main, and BIRs to others. Formal living with street outlook, dedicated meals area and adjoining family room overlooking the generous yard. New heater, oven and vinyl flooring, good storage and facilities, tasteful décor and quiet court location. Be quick and arrange your inspection today.

Price : \$ 340,000
Land Size : 795 sqm
View : <https://www.doepels.com.au/sale/vic/ballarat-western-district/delacombe/residential/house/6187726>

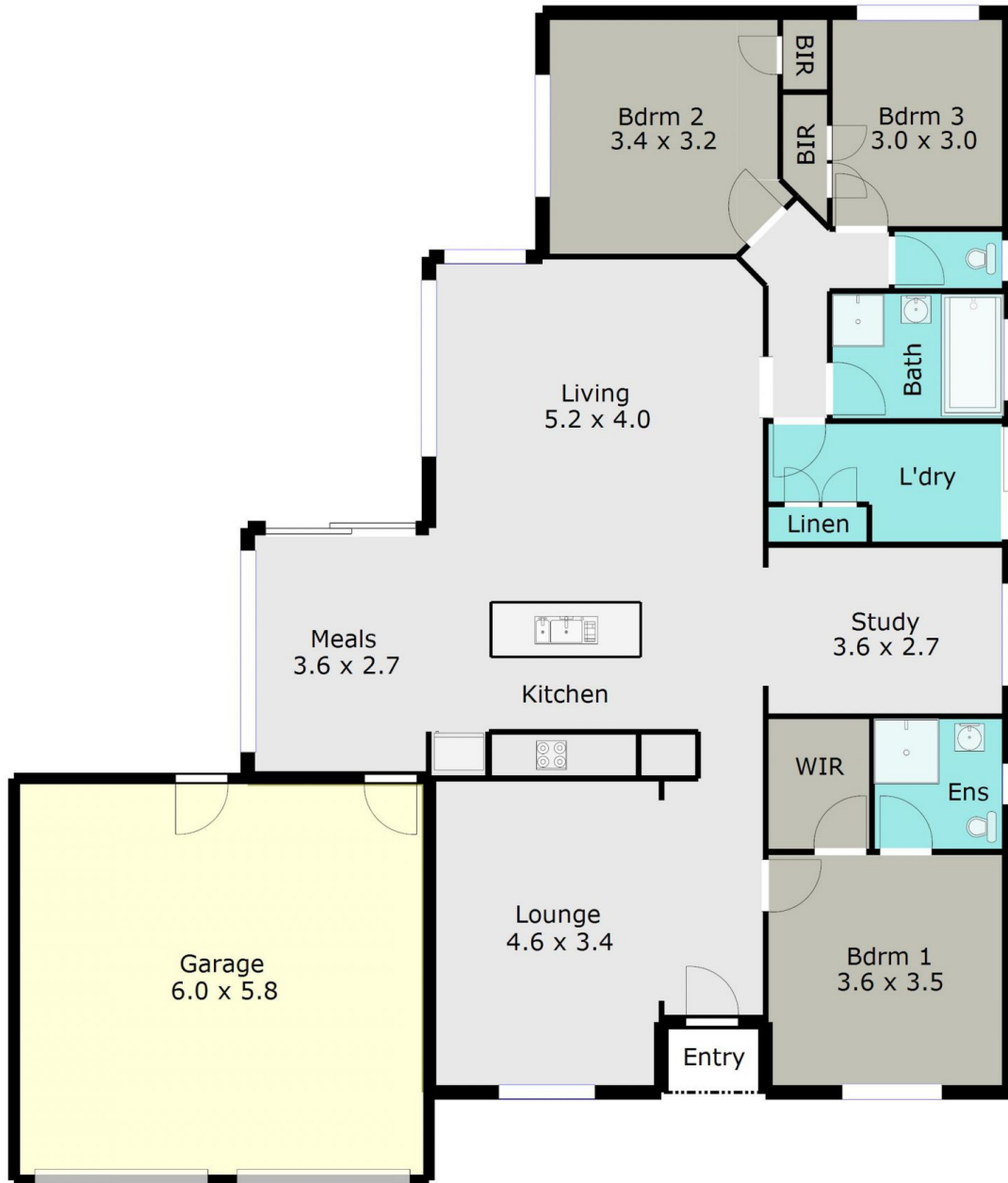


John Morris
03 5331 2000



Leigh Hutchinson
03 5331 2000

TOTAL LIVING AREA: APPROX. 15.4 SQ



DISCLAIMER:

ALL DIMENSIONS ARE APPROXIMATE & NOT 100% TO SCALE.
FOR FURTHER INFORMATION, PLEASE CONTACT YOUR AGENT DIRECTLY.

