



1/15 Hermitage Avenue Mount Clear VIC

2  1  1 

Fix your mind on this and live in this beautiful location in Mt Clear, close to Midland Shopping Centre plus great access to Federation University and the Technology Park. Nestled between a beautiful tree setting, this perfectly well maintained 2 bedroom BV unit offers a sound purchase. Recently renovated to a high standard it comprises 2 good sized bedrooms with built in robes, great sized modern bathroom with large shower, stainless steel electric oven & hotplates and Rinnai gas heating. Outside you will find external sun blinds, low maintenance gardens and a single carport with storage shed for the little extras. With nothing else to do, you can move in straight away with vacant possession. Enquire today!

Land Size : 99 sqm

View : <https://www.doepels.com.au/sale/vic/ballarat-western-district/mount-clear/residential/unit/6187745>

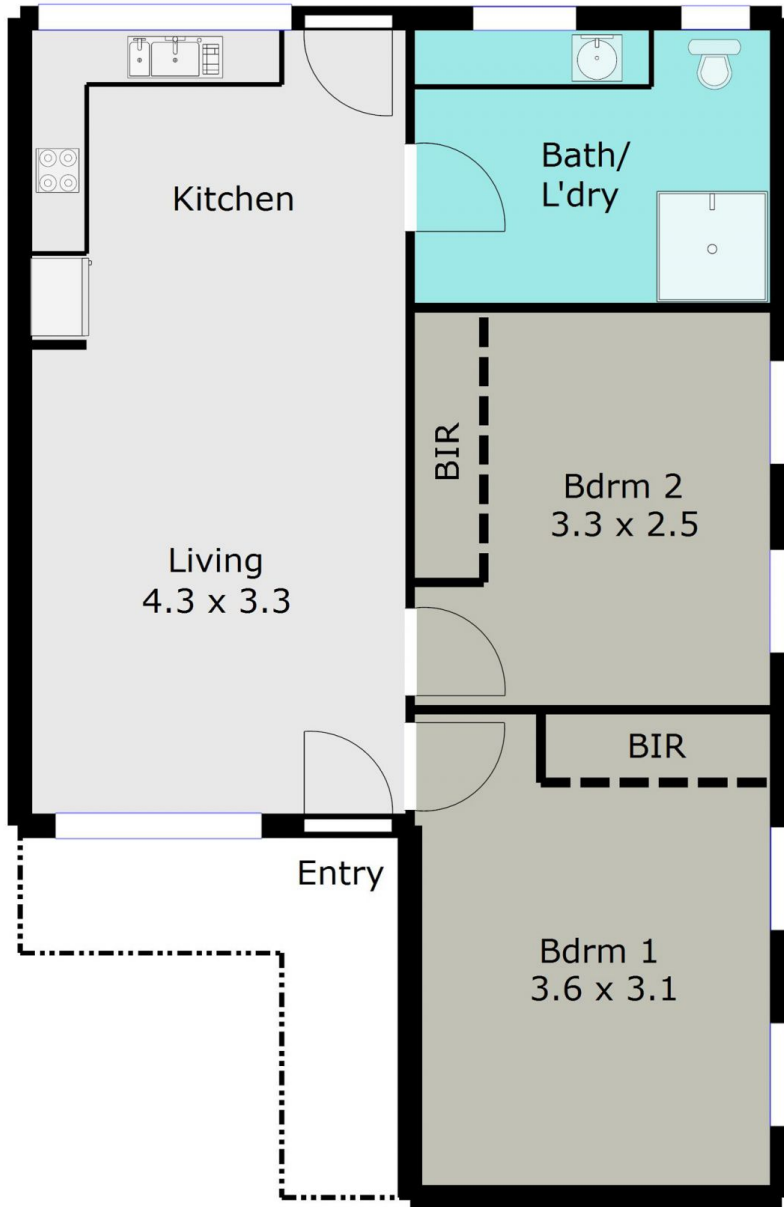


Leigh Hutchinson
03 5331 2000



Ian Moyle
03 5331 2000

TOTAL LIVING AREA: APPROX. 6.6SQ



DISCLAIMER:

ALL DIMENSIONS ARE APPROXIMATE & NOT 100% TO SCALE.
FOR FURTHER INFORMATION, PLEASE CONTACT YOUR AGENT DIRECTLY.

