




23 Rebellion Place Ballarat East VIC

3  2  2 

Affordable yet impressive, this sleek design offers so much quality throughout including stone benchtops, stainless steel appliances, split system and central heating and a sharp contemporary facade delivering attributes not often seen in modern townhouse design. For first home buyers, investors or the elderly looking to downsize this one ticks all the boxes. Externally the smart landscaping outside offers minimal upkeep, with astro turf and low maintenance gardens whilst the 2 car garage provides secure off street parking. A large open planned living space offers enough comfort and space for young families. Tucked neatly away in Rebellion Place (previously 621 York) this suburb townhouse is awaiting your inspection.

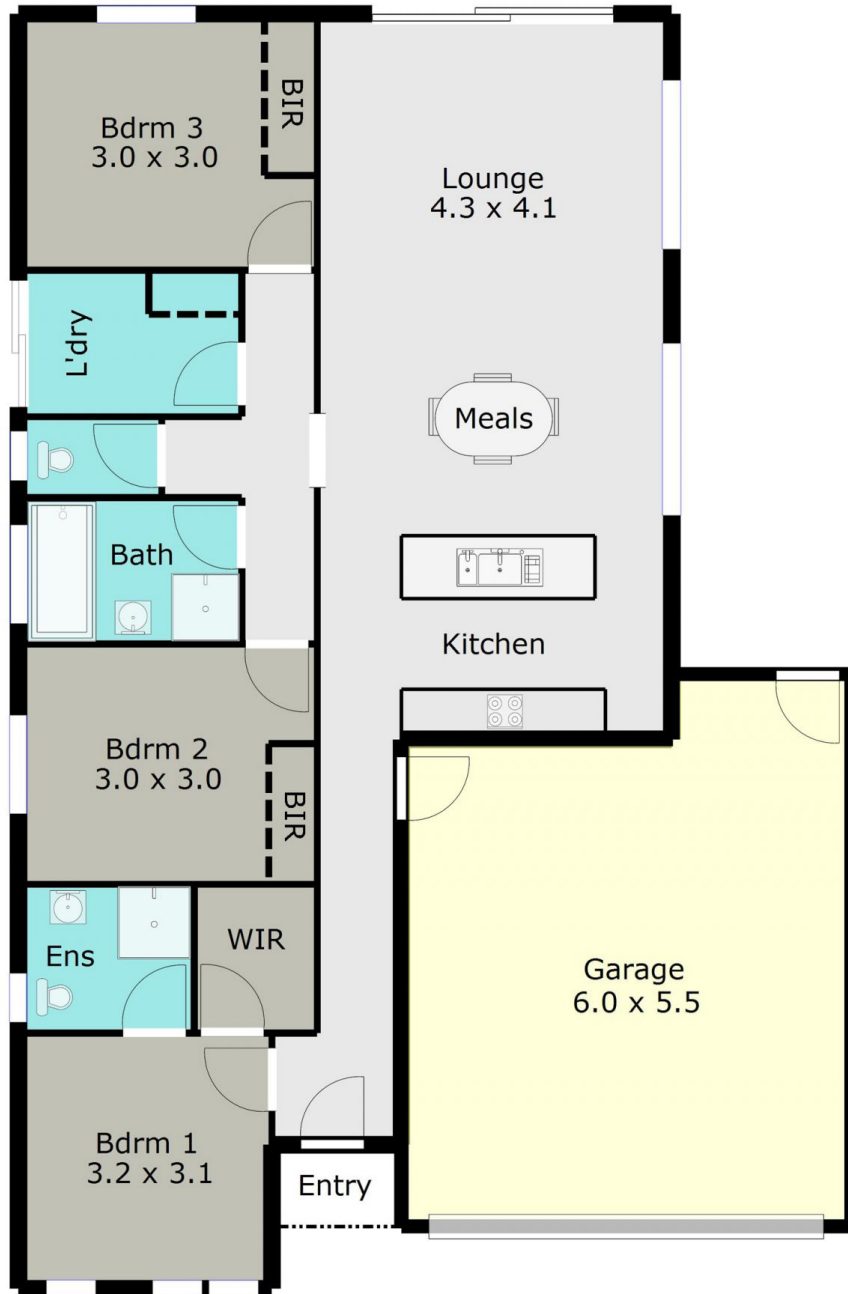
Land Size : 239 sqm

View : <https://www.doepels.com.au/sale/vic/ballarat-western-district/ballarat-east/residential/townhouse/6187753>



Tony Lockyer
03 5331 2000

TOTAL LIVING AREA: APPROX. 11.2 SQ



DISCLAIMER:

ALL DIMENSIONS ARE APPROXIMATE & NOT 100% TO SCALE.
FOR FURTHER INFORMATION, PLEASE CONTACT YOUR AGENT DIRECTLY.

