




10 Rooney Crescent Alfredton VIC

3  2  2 

The standard has been set high with this beautiful home. An existing Classic Homes Display Home this has all the wonderful features you would want in a family home. Comprising of 3 bedrooms, study, two living areas allowing the family to have their own zones, sensational kitchen with walk in pantry, stainless steel appliances, stone bench tops looking out to the outdoor entertaining area. The main bedroom has a large walk in robe and exciting ensuite with a large shower and double vanity for him and her. The gas log fire is the centrepiece of the open plan living whilst the second living area separates the second and third bedrooms so could be utilised as a kids retreat. The study is central to the house and could be transferred into a fourth bedroom if needed. With quality fixtures and fittings throughout, evaporative cooling and central gas heating this home is streets ahead in class. To complete the house is a fully landscaped garden, gas hot water and double lock

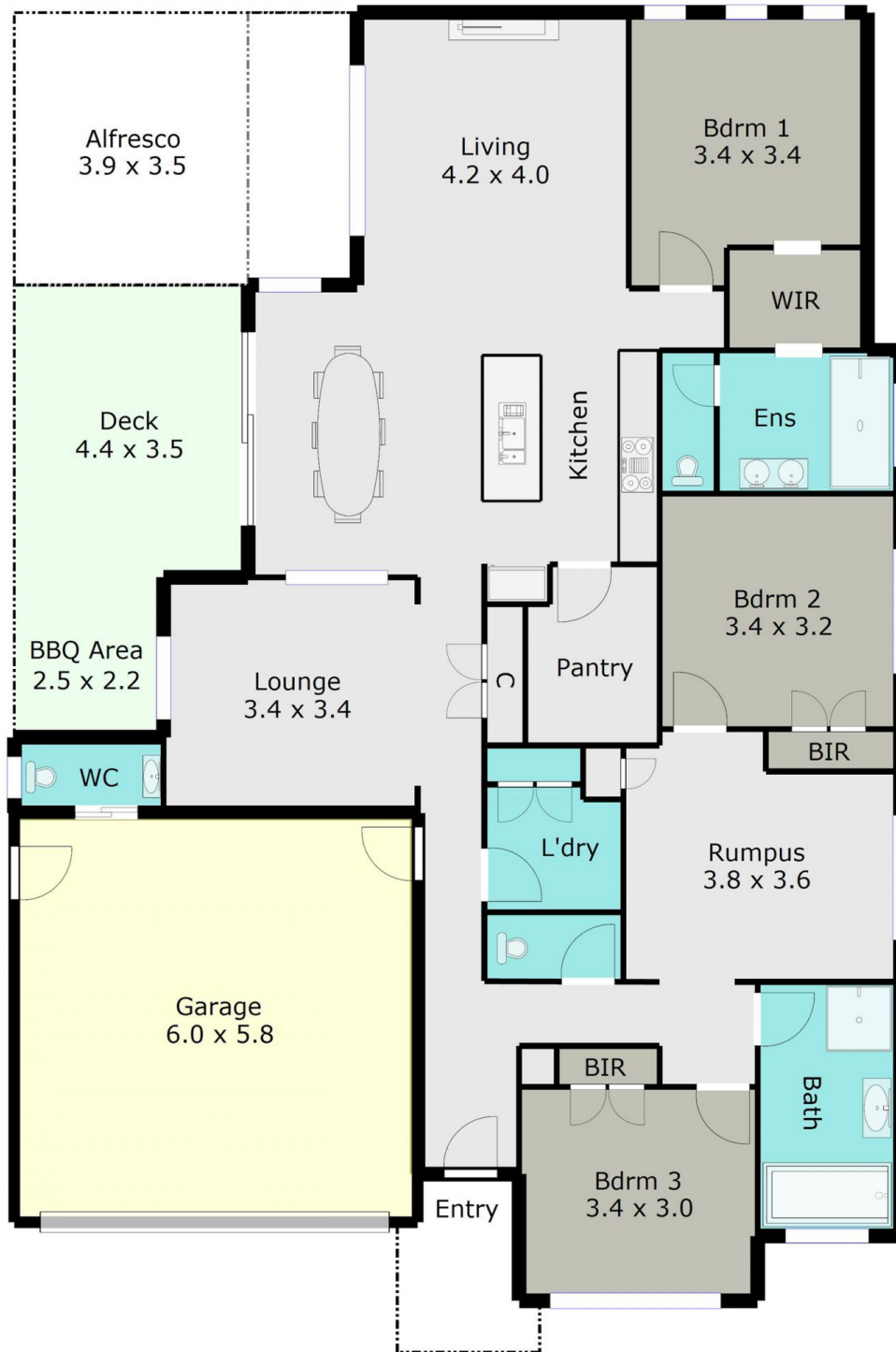
Land Size : 493 sqm

View : <https://www.doepels.com.au/sale/vic/ballarat-western-district/alfredton/residential/house/6187777>



Leigh Hutchinson
03 5331 2000

TOTAL LIVING AREA: APPROX. 17.5 SQ



DISCLAIMER:

ALL DIMENSIONS ARE APPROXIMATE & NOT 100% TO SCALE.
FOR FURTHER INFORMATION, PLEASE CONTACT YOUR AGENT DIRECTLY.

