



20 Junction Street Newington VIC

3 2 3

Just metres from the one of the Region's best Private Schools and within close proximity to Lake Wendouree, opportunities to purchase timeless Newington homes are becoming rare. 20 Junction Street is a home that has been loved by the current owners for many years. It starts with the entry and formal living room delivering quality and class which filters throughout the home. Original hardwood floors, luxurious chandeliers and an elegant colour scheme are just a few features that provide class simply not seen in the modern day construction. The large open living room at the rear has an abundance of natural light beaming through the north facing windows, and combining with the cathedral ceiling to deliver a unique setting, overlooking the back yard and garden. Private and peaceful, the backyard is perfect for entertaining or relaxation, with a large undercover alfresco area. A sharp, updated main bathroom directly services the large master bedroom, whilst the

Land Size : 576 sqm
View : <https://www.doepels.com.au/sale/vic/ballarat-western-district/newington/residential/house/6187793>

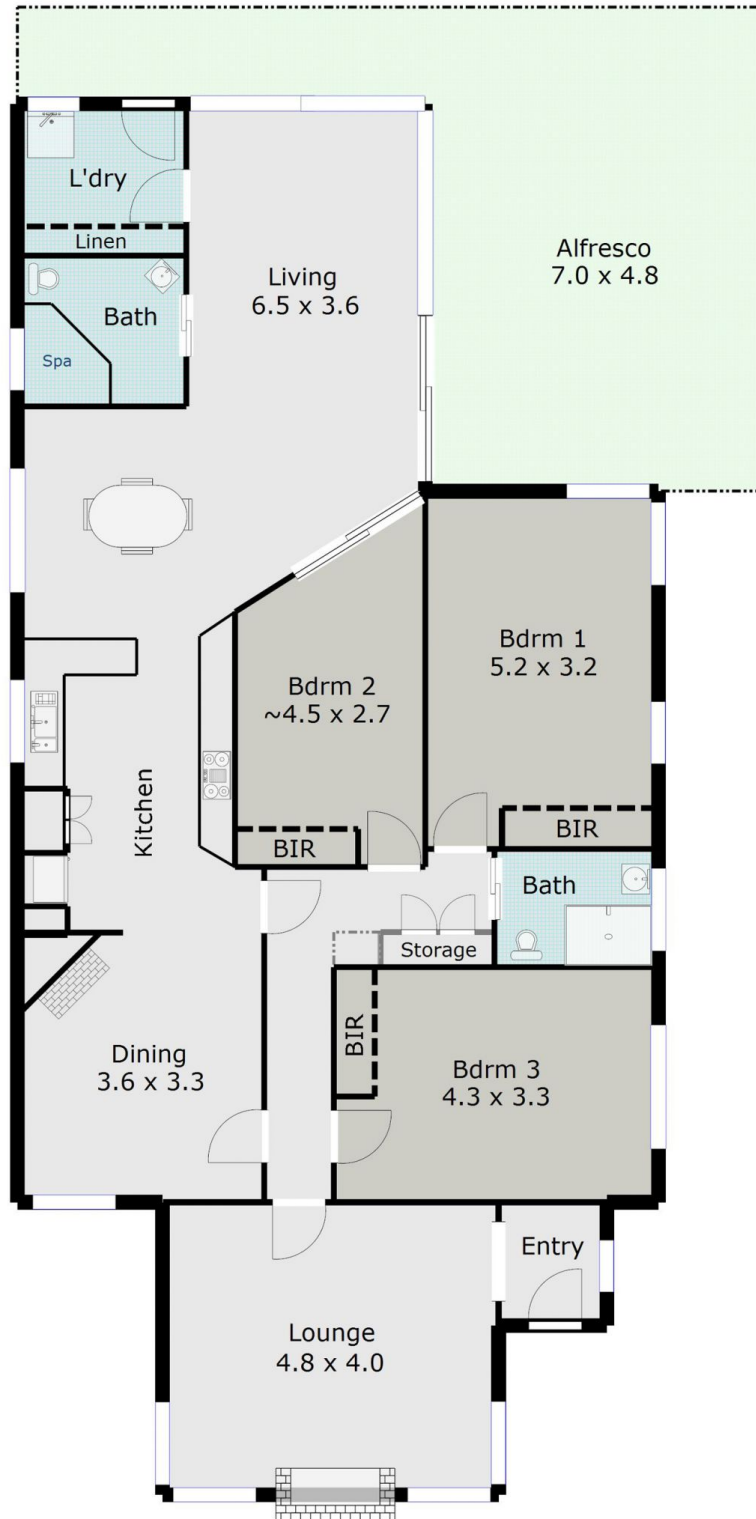


Robert Cunningham
5337 0040



Tony Lockyer
03 5331 2000

TOTAL LIVING AREA: APPROX. 17.6 SQ



DISCLAIMER:

ALL DIMENSIONS ARE APPROXIMATE & NOT 100% TO SCALE.
FOR FURTHER INFORMATION, PLEASE CONTACT YOUR AGENT DIRECTLY.

