



4 Curragh Court Invermay Park VIC

5 🏠 2 🚗 2 🚗

Magnificently presented spacious 5 bedroom home set in a quite court in Invermay Park on an impressive 912m2 block, offers you a family friendly lifestyle. Only minutes to the CBD and easy access to Melbourne the location is just perfect for all family members. The park opposite, Midlands Golf Course, abundant sporting facilities, bus stops nearby and the ever popular Northway Shopping Centre is all encompassing. This is a true sit down and enjoy home with nothing to do.

Light filled open-plan living, dining and kitchen area with an abundance of storage, quality appliances and breakfast bar that looks out over the great undercover alfresco area. Featuring master bedroom with ensuite and walk in robe, four bedrooms with Built in Robes, study or sixth bedroom, central family bathroom and separate formal living area with all the comfort of central gas heating and evaporative cooling. The privacy and friendly neighbourhood provides

Land Size : 912 sqm
View : <https://www.doepels.com.au/sale/vic/ballarat-western-district/invermay-park/residential/house/6187816>

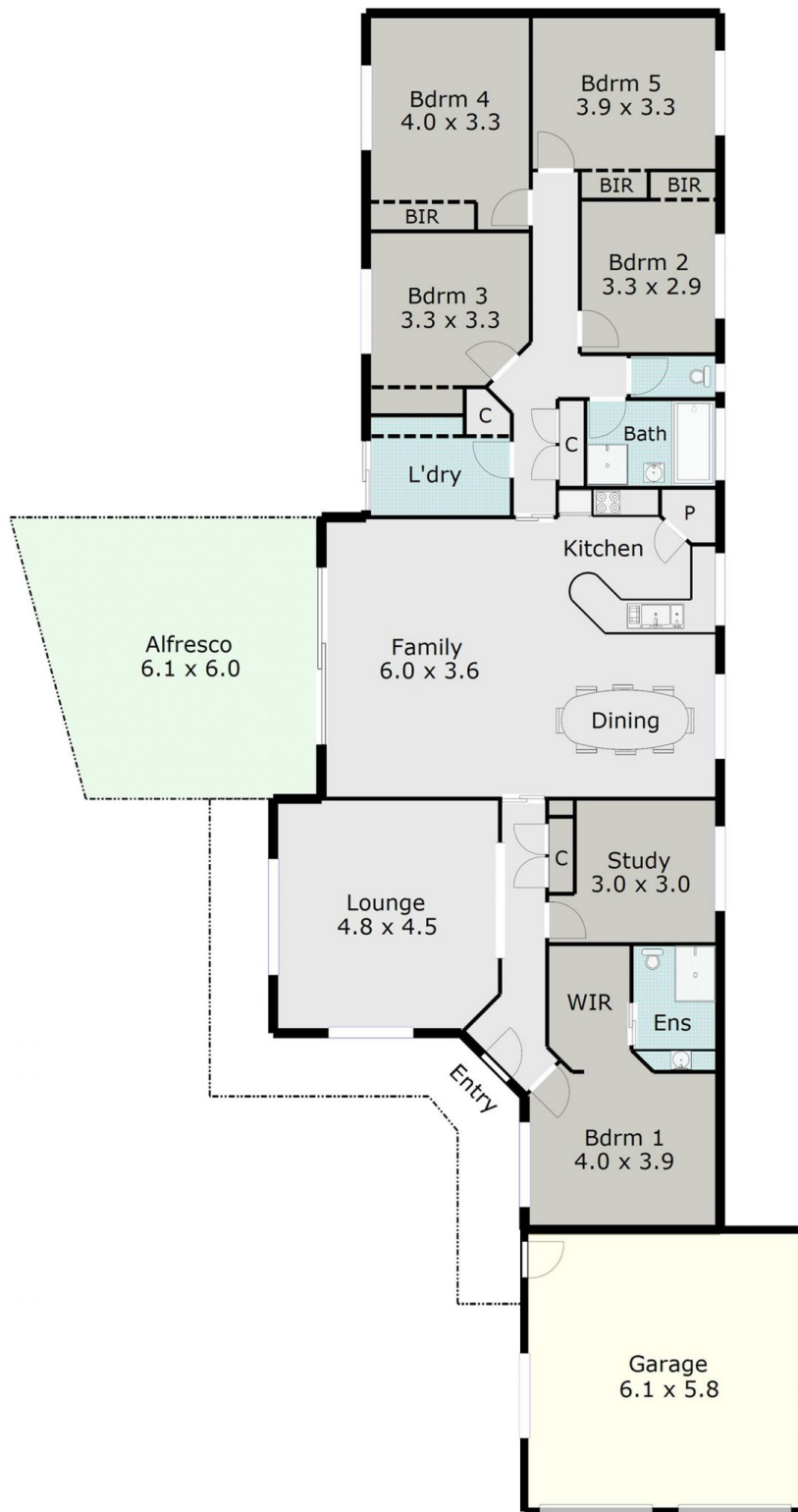


Leigh Hutchinson
03 5331 2000



Tony Lockyer
03 5331 2000

TOTAL LIVING AREA: APPROX. 23.0 SQ



DISCLAIMER:

ALL DIMENSIONS ARE APPROXIMATE & NOT 100% TO SCALE.
FOR FURTHER INFORMATION, PLEASE CONTACT YOUR AGENT DIRECTLY.

