



1 Watson Drive Mount Pleasant VIC

3 2 2

A superior example of its era combined with recent updates for today's living. This stylish elevated, solid built 3 bedroom brick veneer home provides the ideal base with around 1059sqm of land ...and grand elevation to give you great views! Easy property to love today ...and even easier to modernise tomorrow.

Appreciate the lovely renovated kitchen with stainless steel appliances, a quality updated bathroom with separate WC, ensuite, study nook and gas central heating plus reverse-cycle air-conditioning. Give the kids the big backyard they deserve, complete with undercover pergola area for year round enjoyment, or simply relax on your front deck and enjoy the views overlooking Mount Pleasant and Ballarat.

Situated minutes to Ballarat's CBD and within close proximity to all amenities this property is a must on your inspection list.

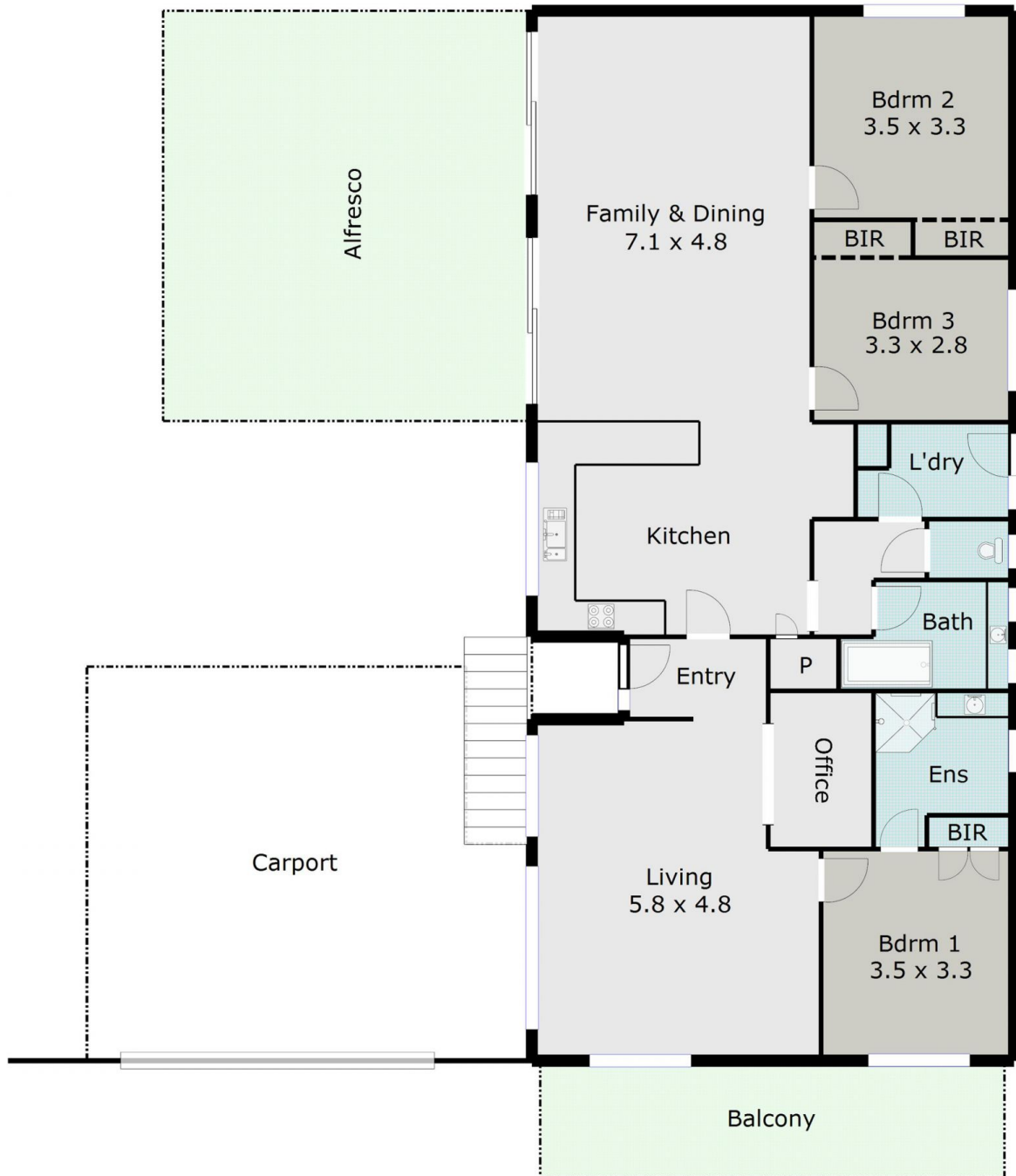
Land Size : 1059 sqm

View : <https://www.doepels.com.au/sale/vic/ballarat-western-district/mount-pleasant/residential/house/6187842>



Leigh Hutchinson
03 5331 2000

TOTAL LIVING AREA: APPROX. 17.1 SQ



DISCLAIMER:

ALL DIMENSIONS ARE APPROXIMATE & NOT 100% TO SCALE.
FOR FURTHER INFORMATION, PLEASE CONTACT YOUR AGENT DIRECTLY.

