






610 Lydiard Street Soldiers Hill VIC

4  2  1 

Behind the captivating front street appeal you will find a graceful balance of modern interior touches blended beautifully with the period finesse thought-out this gorgeous 4 bedroom home right in the heart of Ballarat. This brilliant location allows easy walking access to schools and ST Columba's primary school is right across the road, local butchers shop, cafes, hotels, supermarkets, chemists and 5 minutes approx. to Lake Wendouree and the Ballarat train station; perfect for commuters. Central locations do not get much better than this!

Spacious bedrooms with built in robes are serviced by a modern central bathroom with separate bath and shower, the main bedroom is complete with walk in robe and ensuite. The sleek gourmet kitchen with its striking waterfall bench and overhead feature pendant lighting caters for everyday living; with stainless steel appliances, stone

Land Size : 459 sqm

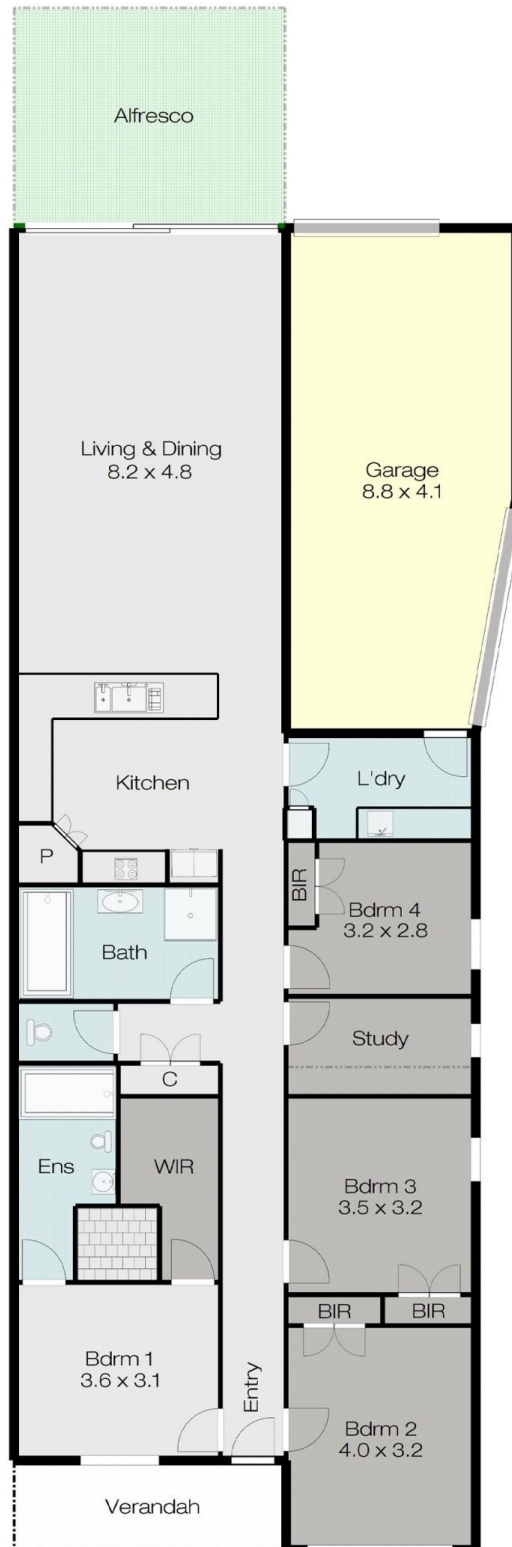
View : <https://www.doepels.com.au/sale/vic/ballarat-western-district/soldiers-hill/residential/house/8012008>



Robert Cunningham
5337 0040



Matthew Tunbridge
03 5331 2000



DISCLAIMER:

ALL DIMENSIONS ARE APPROXIMATE & NOT 100% TO SCALE.
FOR FURTHER INFORMATION, PLEASE CONTACT YOUR AGENT DIRECTLY.

