




202 Smythes Road Delacombe VIC

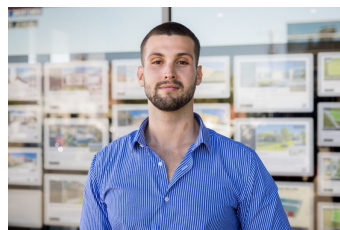
4  2  4 

A proper family home available for lease in lovely Delacombe. Many features of this home include four bedrooms, master with ensuite and walk in robe, second family bathroom and separate toilet, large open plan kitchen/dining with gas and electric cooking, dishwasher, stone benches and plenty of cupboards. Two separate living areas each with split systems and a woodfire in the central dining space. Externally has fully enclosed yard that the family can use, large deck, undercover patio area, double carport with 6.2x8.8 shedding. Inspection is a must. 12 Month lease.

Applications via realestate.com.
Available for inspection mid June.

Type : House

View : <https://www.doepels.com.au/lease/vic/ballarat-western-district/delacombe/residential/house/8022922>



Jarrod Kemp
03 5337 0066