



34 Anglesea Street Winter Valley VIC

2  1  1 

This idyllic 2 bedroom home offers plenty of style and appeal for downsizers, professionals and investors alike. Warm and welcoming with modern floorplan comforts this home offers low maintenance living on a 252m² corner block and is expertly crafted by the reputable McMaster Builders. This convenient Winter Valley location offers easy access to local shops, child care, both public and private schools, parks and playgrounds, and public transportation is on your doorstep and you will appreciate the short drive to Delacombe Town Centre precinct providing a range of dining, shopping, medical and leisure options only moments away.

Notable highlights include ducted heating throughout, double-glazed windows that provide energy efficiency and

[For full version visit the website](#)

Type : House
Price : \$445,000-\$470,000
Land Size : 252 sqm
View : <https://www.doepels.com.au/sale/vic/ballarat-western-district/winter-valley/residential/home/8159094>



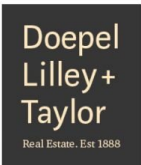
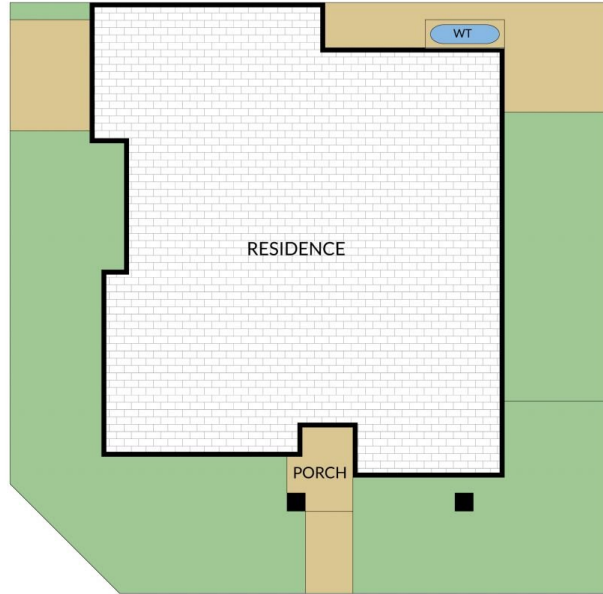
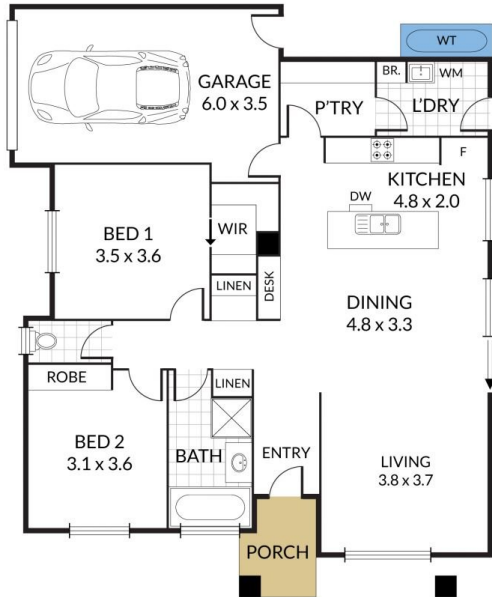
Matthew Tunbridge
03 5331 2000

Internal 131m² External 3m² Total 134m² Land Size 252m²

34 Anglesea Street, **Winter Valley**



2 x 1 x 1 x



NOTE: Every precaution has been taken to verify the accuracy of the above details. However, prospective purchasers are advised to make their own enquiries.